

RōM

STACKER 22', 24', 26' – RV ENTHUSIAST EDITION

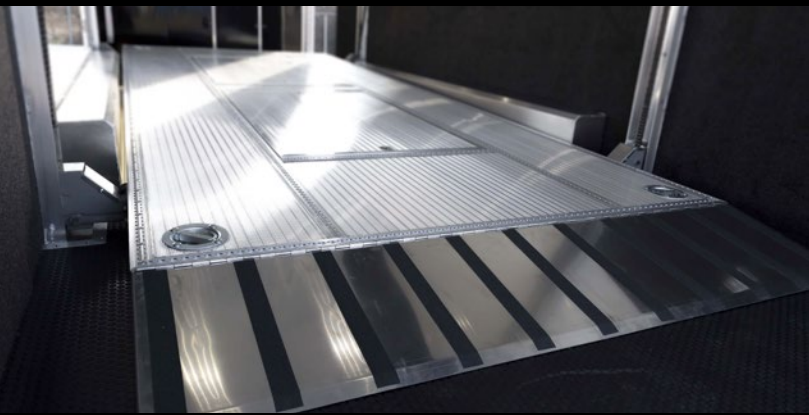
SPORT·TRUCK_{RV}

www.SportTruckRV.com



Built for the Long Haul

The RōM Stacker is our premium stacker car hauler, and we've loaded it with the features you need most. The chassis is fully welded, using state-of-the-art weld tables that ensure precision alignment of all support members. It's the optimal way to transport your treasured racing vehicles, classic collectibles or weekend toys.



GO YOUR OWN WAY

Go where you want and bring what you want. No matter how often you hit the road or what you decide to bring along on any given trip, the RōM Stacker will get you there. It's equipped with plenty of space and storage so you can haul multiple vehicles, including cars, ATVs, motorcycles and other toys. Available in several lengths; shorter models ideal for hauling behind an RV.

Details and options at ATCtrailers.com

STANDARD ON ALL STACKER MODELS:

- All-aluminum chassis for lightweight towing.
- Best lift on the market; aluminum tilt deck with integrated airline tie-down rack.
- Welded front attic storage loft.
- All-aluminum cabinetry, ceiling, and wall covering.
- Hardwired for back-up camera.

(See reverse side for a complete list of features and options.)

BASE MODELS

- 8.5 x 22' w/ (2) 7000# Torsion Axles
- 8.5 x 24' w/ (3) 6000# Torsion Axles
- 8.5 x 26' w/ (3) 6000# Torsion Axles

COLORS

EXTERIOR



Polar White

Black

INTERIOR WALL & CEILING



Polar White

SPRING BOX, COVE



Black

CABINETS DOORS



Black

White

Medium Charcoal

Light Pewter Metallic

STANDARD FEATURES - 22', 24', 26' – RV ENTHUSIAST EDITION

FRAME

- Spread Axle
- 16" Wheel - 8 Lug Aluminum Rim
- Extended Tongue
- 16" O/C Sidewalls
- 16" O/C Floor - Chassis
- 16" O/C 1" x 2" Roof Members
- 6000# Rear Ramp Door
- Transition Flap – 16" Black Coin Flooring
- SS Rear Paddle Latches (on Ramp Door)
- Bogey Wheels
- 4 Bolt Coupler – Flat Front Tongue
- Winch Plate
- Interior Height 11' 4"
- Pod Jacks – Stabilizing
- Spare Tire Mount Backer (Attic RS - front)
- Girard Lateral Arm Prep for 20' Awning
- 4500# Electric Tongue Jack

EXTERIOR

- ATP Gravel Guard (48")
- Screwless Exterior (0.050") Metal
- One-Piece Aluminum Roof
- DOT tape
- Cast Corners – Polished
- Upper & Lower Trim – 4"
- SS Front Corner & Top Radius Trim

EXTERIOR (cont.)

- SS Rear Vertical Corners
- Brushed Fenderettes
- Mid Ship Lights and Turn Signals
- Color Matched – Rear Header
- Wired Rear Camera Prep – Voyager

INTERIOR

- Black TPO Floor and Ramp
- Aluminum Walls and Ceiling - (0.030) - White
- 0.125" ATP Attic
- Attic Tiedowns – 4-Rope Rings
- 36" Entry Door – 22' & 24' Model
- 48" Entry Door – 26' Model
- Slide In Slide Out Step
- Upper and Lower Cabinets
- LED Strip Lighting (Under Cab and Lift)
- Premium Escape Door – 72"
- Stacker Cove – Black
- 15 Amp Exterior Motorbase w/ Interior GFCI & (1) recept
- 55 Amp Converter/Charger
- (2) 14" LED Light – Under Attic w/ Switch
- (2) AGM Batteries
- (6) 14" LED Ceiling Lights – (2) 3-Way Switches
- 14' Stacker Lift With Removable Inserts
- Stacker Lift Control – Wall Mounted Front & Rear

PLUS PACKAGE - 22', 24', 26' – RV ENTHUSIAST EDITION

- Perimeter Skirting
- Polished Fenderettes
- Lower Trim – 7"
- 50 Amp Breaker Box w/ 60 Amp Converter
- Power Cutoff Switch – Manual
- (3) Interior Outlets – 15 amp
- (1) Exterior Outlet – 15 amp
- Wall Airline Track Segment

- Attic Tie Downs – 2 Rows A-Track
- (4) Floor Mounted Swivel D-Rings
- Stainless Steel Rear Header and Spoiler
- (2) Exterior Curbside Scene Lights
- (3) AGM Batteries
- In Floor Battery Box – (3) Batteries
- Exterior Docking Lights
- 40" Bedrug – Interior Sidewalls

- High Visibility Light Package:
- (1) Pair Backup Lights Diagonal - Ramp Door
 - (2) Pair Tail Lights Diagonal – Ramp Door
 - (3) Pair Tail Lights Diagonal – Rear Header
 - (2) Extra Clearance Lights – Lower
 - (4) Extra Clearance Lights – Upper

Quote #: 126183
22' RV - Plus STK

Status: Version: Created: Revised:
Quote 1.0.0 10/14/2021 10/14/2021



SALES CONTACT:
SportTruckRV
866-570-1465
www.SportTruckRV.com

SPORT-TRUCK_{RV}
www.SportTruckRV.com

CONTACT INFORMATION

NOTES

MODEL INFO

Configured Model #: STKAB8522+0-2T7.0K

RoM Stacker Aluminum Trailer

8.5'W x 22'L x 11.3'H, (2) 7000# Torsion
Axle(s)

Warranty: 5 YR STR, 3 YR LTD, 1 YR ELEC
WARRANTY

COLOR - EXTERIOR: SELECT COLOR

COLOR - CABINET DOORS: SELECT COLOR

COLOR - COVE, SPRINGBOX: BLACK

SPECIFICATIONS

| Part Name | Qty | UOM | Total Ext. \$ | Ref. |
|--|-----|-----|---------------|------|
| BASE MODEL | | | | |
| STKAB8522+0-2T7.0K | 1 | ea | \$86,814 | STD |
| AXLE - 7000# - TORSION - EZ LUBE HUBS - ELECTRIC BRAKES | 2 | ea | | STD |
| AXLE SPACING - SPREAD AXLE | 1 | ea | | STD |
| TONGUE - EXTENDED TRIPLE TUBE - 12" | 1 | ea | | STD |
| FRAME PROTECTION - BOGEY WHEELS • INCLUDES: SKID PLATES | 1 | pr | | STD |
| FLOOR DESIGN - FLAT | 1 | ea | | STD |
| JACK - TONGUE - ELECTRIC - 4500# | 1 | ea | | STD |
| COUPLER - FLAT NOSE - 2-5/16" - 25,000# | 1 | ea | | STD |
| CROSS MEMBERS - FLOOR - 16" O/C | 1 | ea | | STD |
| CROSS MEMBERS - WALL - CS - 16" O/C - 1" X 1.5" | 1 | ea | | STD |
| CROSS MEMBERS - WALL - RS - 16" O/C - 1" X 1.5" | 1 | ea | | STD |
| CROSS MEMBERS - ROOF - 16" O/C - 1" X 2" | 1 | ea | | STD |
| JACK - STABILIZER - POD - 3000# | 1 | pr | | STD |
| TIRE/WHEEL - ST235/85R16/LRG - RADIAL ON ALUMINUM - W/STAINLESS STEEL LUGNUTS | 4 | ea | | STD |
| BACKER - AL - TUBE 1" X 3" - SPARE TIRE | 1 | ea | | STD |
| DOOR - REAR RAMP - HD PREMIUM - CONTINUOUS ALUMINUM HINGE - 3600# RATED MAX LOAD - 6000# VEHICLE LOAD | 1 | ea | | STD |
| RAMP DOOR FLOORING - REAR - TPO - BLACK COIN | 1 | ea | | STD |
| TRANSITION FLAP - TPO - BLACK COIN - 16"L | 1 | ea | | STD |
| DOOR LATCH - PADDLE - STAINLESS STEEL | 1 | pr | | STD |

| | | |
|---|-------|-----|
| DOOR - ENTRANCE - 405 SERIES - 36" X 78" - FMVSS LOCK | 1 ea | STD |
| STEP - SLIDE IN/OUT - ALUMINUM - 36" | 1 ea | STD |
| DOOR - ESCAPE - PREMIUM - 88" X 72" - TOP HINGE - FMVSS LOCK - REMOVABLE WHEEL WELL | 1 ea | STD |
| <ul style="list-style-type: none"> • ALUMINUM STEP • ONE PIECE REMOVABLE INTERIOR WHEEL WELL • EXTERIOR FENDERETTES INTEGRATED INTO DOOR • (2) 140# GAS SHOCKS • (2) PROP RODS • INCLUDES: TURN SIGNAL | | |
| ATTIC - LIGHT DUTY W/ ATP FLOOR (RATED AT 20# / SQ. FT.) - W/ AIRLINE TRACK | 1 ea | STD |
| CABINET CONFIGURATION - PKG 1 - STRAIGHT LOWER, UPPER | 1 ea | STD |
| <ul style="list-style-type: none"> • CABINET DOOR COLOR: SELECT COLOR • UNDER UPPER CABINET: LED STRIP LIGHT WITH 12V SWITCH - BLACK • FRONT WALL FULL WIDTH | | |
| INTERIOR WALLS AND CEILING - SCREWLESS ALUMINUM | 1 ea | STD |
| <ul style="list-style-type: none"> • CEILING COLOR: POLAR WHITE • COVE, SPRINGBOX COLOR: BLACK | | |
| INTERIOR HEIGHT - 11.3' | 1 ea | STD |
| WINCH PLATE - UNDER FLOOR - FOR FUTURE MOUNTING | 1 ea | STD |
| INTERIOR WALLS - BEDRUG - 40" HIGH | 22 ft | STD |
| FLOORING - TPO - BLACK COIN | 1 ea | STD |
| LIFT - SPLIT RAIL - 14' - AL - 6000# CAPACITY - MILL FINISH AL UNDER SIDE - (11' - 11.33' INTERIOR HEIGHT) | 1 ea | STD |
| <ul style="list-style-type: none"> • SPLIT RAIL DESIGN • 6000# CAPACITY • 4 1/2" THICK • TILT CAPABILITY • INCLUDES: HINGED TRANSITION RAMP • INCLUDES: EXTRUDED ALUMINUM FLOORING • INCLUDES: (4) 6000# D-RINGS • INCLUDES: RECESSED AIRLINE TRACK • INCLUDES: STANDARD UNDER LIFT STRIP LIGHTING W/ 3-WAY SWITCH • INCLUDES: 2 WALL REMOTE LOCATIONS • INCLUDES: LIFT INSERTS - #1500 CAPACITY • INCLUDES: HYDRAULIC PUMP | | |
| D-RINGS - 6000# - RECESSED - SWIVEL | 4 ea | STD |
| AIRLINE TRACK - SURFACE MOUNT - WALL | 4 ft | STD |
| WHEEL BOX - SMOOTH AL | 1 ea | STD |
| AWNING - PREP - GIRARD 2000 - 12V | 1 ea | STD |
| <ul style="list-style-type: none"> • SEE DEALER FOR DETAILS • INCLUDES: STRUCTURE AND WIRE PREP | | |
| DOT TAPE | 22 ft | STD |
| FENDERETTES - AL - POLISHED | 4 ea | STD |
| GRAVEL GUARD - ATP - 48" - WITH J RAIL | 1 ea | STD |
| EXTERIOR - ALUMINUM - STANDARD COLOR - .050 | 1 ea | STD |
| ROOF - ONE PIECE - ALUMINUM | 1 ea | STD |
| TRIM - VERTICALS - FRONT & TOP RADIUS - STAINLESS STEEL W/ CAST CORNERS - POLISHED | 1 ea | STD |
| TRIM - RUB RAIL - LOWER - ALUMINUM - 7" | 1 ea | STD |
| TRIM - RUB RAIL - UPPER - ALUMINUM - 4" | 1 ea | STD |
| TRIM - SPOILER - REAR - STAINLESS STEEL W/ 3 LED LIGHTS | 1 ea | STD |
| <ul style="list-style-type: none"> • INCLUDES: REAR HEADER - STAINLESS STEEL | | |
| TRIM - VERTICALS - REAR - STAINLESS STEEL | 1 ea | STD |
| SKIRTING - PERIMETER SKIRTING W/ REVERSE BEAVERTAIL | 1 ea | STD |
| POWER INLET - MOTORBASE - 50A - BLACK - W/ SHORE CORD - 25' | 1 ea | STD |

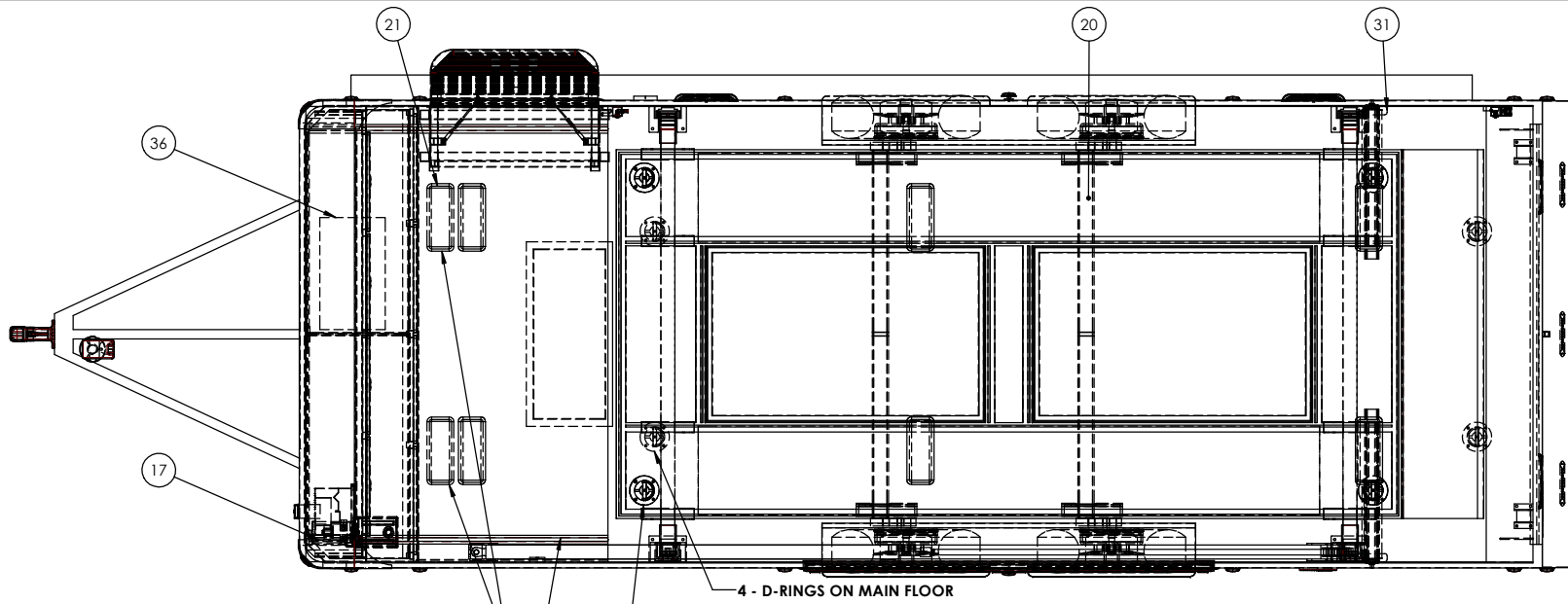
| | | |
|--|------|-----|
| RECEPT - INTERIOR - 120V - 15A • COLOR: BLACK | 3 ea | STD |
| BATTERY - 12V AGM | 3 ea | STD |
| BATTERY BOX - IN-FLOOR - HOLDS UP TO 3 BATTERIES | 1 ea | STD |
| SWITCH - POWER CUT-OFF - MANUAL - 12V | 1 ea | STD |
| BREAKER BOX - 50 AMP - 120V ONLY - 60 AMP CONVERTER - 12V FUSE PANEL - INTELI-POWER UNIT | 1 ea | STD |
| LIGHT - CLEARANCE - LED - 12V - RED - LOWER | 2 ea | STD |
| LIGHT - CLEARANCE - LED - 12V - RED - UPPER | 7 ea | STD |
| LIGHT - CLEARANCE - LED - 12V - AMBER - LOWER | 6 ea | STD |
| LIGHT - CLEARANCE - LED - 12V - AMBER - UPPER | 8 ea | STD |
| LIGHT - TAILLIGHT - SLIMLINE - DIAGONAL - LED - 12V - RED - RAMP DOOR | 2 pr | STD |
| LIGHT - TAILLIGHT - SLIMLINE - DIAGONAL - LED - 12V - RED - REAR HEADER | 3 pr | STD |
| LIGHT - BACK UP - SLIMLINE - DIAGONAL - LED - 12V - RAMP DOOR | 1 pr | STD |
| LIGHT - DOCKING - LED - STAINLESS STEEL - 12V | 1 pr | STD |
| LIGHT - TURN SIGNAL/CLEARANCE - MIDSHIP - LED - 12V - SIDE MOUNT | 1 pr | STD |
| BACK-UP CAMERA - PREP - VOYAGER - WIRED | 1 ea | STD |
| LIGHT - SCENE - LED - HIGH OUTPUT - 12V - SURFACE MOUNT - 14" X 2.5" • LOCATION: CURB SIDE | 2 ea | STD |
| SWITCH - WALL - 12V • USED FOR: EXTERIOR SCENE LIGHTS • COLOR: BLACK | 1 ea | STD |
| LIGHT - RECTANGULAR - LED - 14" - 12V - SURFACE MOUNT | 6 ea | STD |
| SWITCH - WALL - 3 WAY - 12V • USED FOR: LIGHT - RECTANGULAR - LED - 14" - 12V - SURFACE MOUNT • COLOR: BLACK | 1 pr | STD |
| SWITCH - RELAY - 12V - 30A | 1 ea | STD |
| LIGHT - RECTANGULAR - LED - 14" - 12V - SURFACE MOUNT • LOCATION: UNDER ATTIC | 2 ea | STD |
| SWITCH - WALL - 12V • USED FOR: LIGHT - RECTANGULAR - LED - 14" - 12V - SURFACE MOUNT • COLOR: BLACK | 1 ea | STD |
| RECEPT - EXTERIOR - 120V - 15A - GFI PROTECTED | 1 ea | STD |
| SWITCH - WALL - 12V • USED FOR: SPOILER LIGHTS • COLOR: BLACK | 1 ea | STD |

PACKAGES

| | | |
|-------------------------------|------|--------------|
| PACKAGE - STACKER PLUS | 1 ea | \$10,570 OPT |
|-------------------------------|------|--------------|

TOTALS

| | |
|-----------------|--------------------|
| Subtotal | \$97,384.00 |
| Total | \$97,384.00 |



| BOM TABLE | | | | |
|-----------|---------|-----------------------------------|--|-----|
| ITEM NO | PART NO | FILE NAME | DESCRIPTION | QTY |
| 1 | | 87493 | BACK UP LIGHT | 3 |
| 2 | | AIRLINE TRACK, SURFACE | | 2 |
| 3 | | AIRLINE TRACK, SURFACE | | 1 |
| 5 | | AWNING LATERAL ARM | 20' | 1 |
| 6 | | AXLE - TORSION | 7000#, HF-93 OB-78, 22.5° Up, ST, 8-6.5, 1/2 Studs | 2 |
| 7 | | BOGEY WHEEL | BOGEY WHEEL | 2 |
| 8 | | BOX, IN FLOOR | 3 BATTERIES | 1 |
| 9 | 48260 | BREAKER BOX | 50 AMP WITH CONVERTER | 1 |
| 10 | | CAMERA, BACKUP | | 1 |
| 11 | | CONTROL STATION - LIFT | FORE | 1 |
| 12 | | CONTROL STATION - LIFT | AFT | 1 |
| 13 | | COUPLER, 25K BULLDOG | 25,000 CAPACITY 5/16 BULLDOG COUPLER | 1 |
| 14 | 13412 | D-RING - RECESSED | 6,000# | 8 |
| 17 | | HYDRAULIC POWER UNIT - 12V - LIFT | 12V - 2500 PSI | 1 |
| 18 | 117352 | JACK - TONGUE | Husky 5000# | 1 |
| 20 | | LIFT, VEHICLE - 6000# | 14FT; REMOVABLE INSERTS | 1 |
| 21 | | LIGHT, CEILING - SURFACE MOUNT | | 8 |
| 22 | | LIGHT, LED CLEARANCE | AMBER LENS | 16 |
| 23 | | LIGHT, LED CLEARANCE | RED LENS | 9 |
| 24 | | LIGHT, LED DOCKING | | 2 |
| 25 | 131501 | LIGHT, LED SCENE | 10V-14V - 2300 Lumen | 2 |
| 26 | | LIGHT, SLIM LINE | Brake light | 10 |
| 27 | | LIGHT, SLIM LINE | Back-up light | 2 |
| 28 | | MOTORBASE | 50 AMP | 1 |
| 29 | | OUTLET, ELECTRICAL | 120V 15A EXTERIOR | 1 |
| 30 | 11978 | OUTLET, ELECTRICAL | 120V 15A INTERIOR | 3 |
| 31 | | POD JACK, STACKER | 30" | 2 |
| 32 | | STEP ASSY, AL - SLIDE IN-OUT | | 1 |
| 33 | | TIRES | 235/85/16 | 4 |
| 34 | | TURN SIGNAL | | 2 |
| 35 | | WHEEL WELL - AL | 8.5 x 12.0 x 80.0 | 2 |
| 36 | | WINCH PLATE | | 1 |

ATTENTION:
 ATC IS NOT RESPONSIBLE FOR CLEARANCE OF VEHICLE UNTIL CUSTOMER/DEALER COMPLETES VEHICLE CLEARANCE FORM AND IS VERIFIED BY ATC ENGINEERING DEPARTMENT.

DIMENSIONS ARE NOMINAL. STRUCTURAL MEMBERS OFTEN DICTATE WHERE INTERIOR FEATURES CAN BE PLACED. CONSEQUENTLY, SOME DIMENSIONED ITEMS RETAIN A +/- 2" TOLERANCE. CRITICAL (BUBBLED) DIMENSIONS WILL RETAIN A TOLERANCE OF +/- 1/4".

ALL LOCATIONS ARE NOMINAL UNLESS CRITICAL DIMENSIONS ARE SPECIFICALLY NOTED

PROPRIETARY AND CONFIDENTIAL:
 THE INFORMATION CONTAINED IN THIS DRAWING IS THE SOLE PROPERTY OF THE ALUMINUM TRAILER COMPANY. ANY REPRODUCTION IN PART OR AS A WHOLE WITHOUT THE WRITTEN PERMISSION OF THE ALUMINUM TRAILER COMPANY IS PROHIBITED.

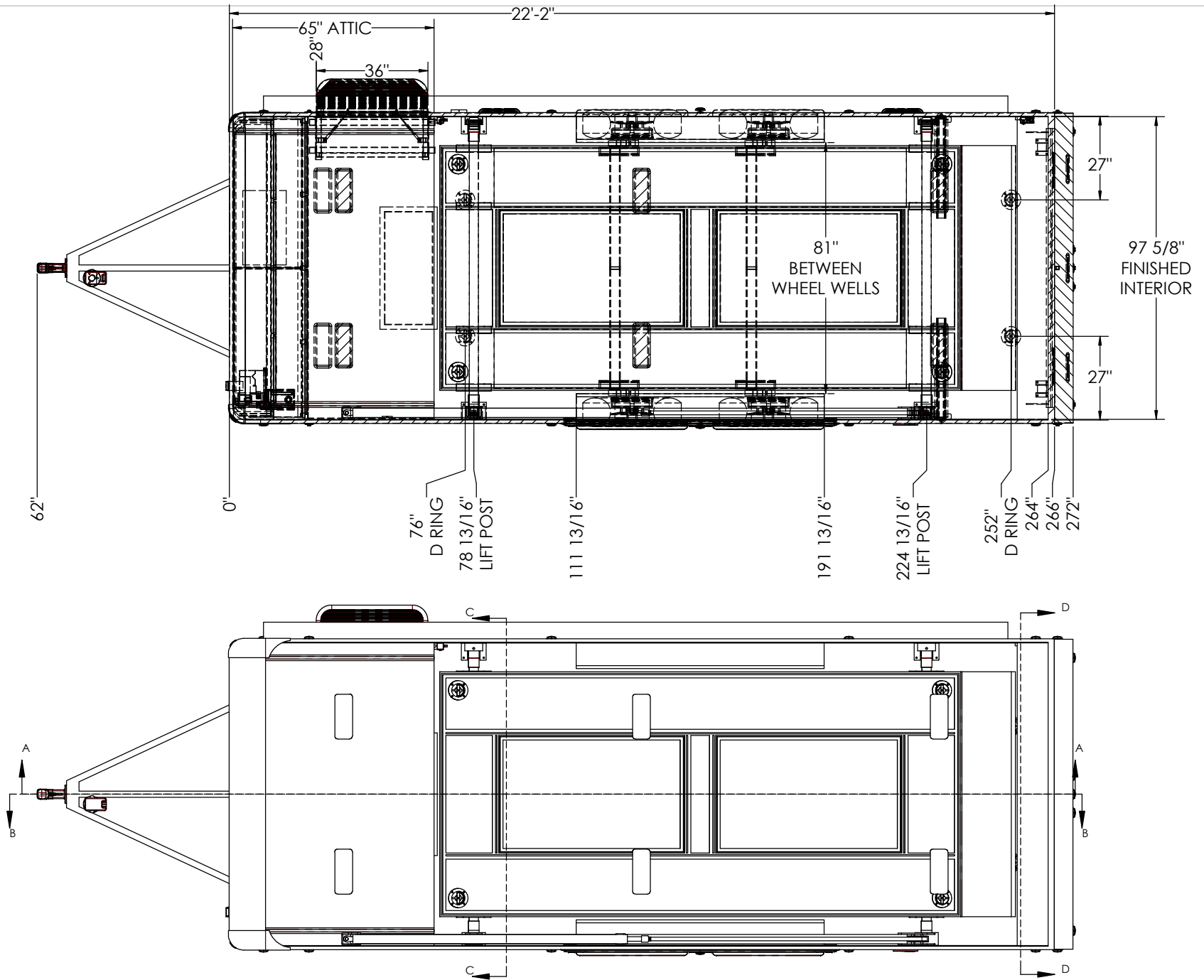


TITLE: **STKAB8522 2T7.0-PLUS**

DRAWN BY: HTY DATE: 8/17/21 VIN/PART # REV.

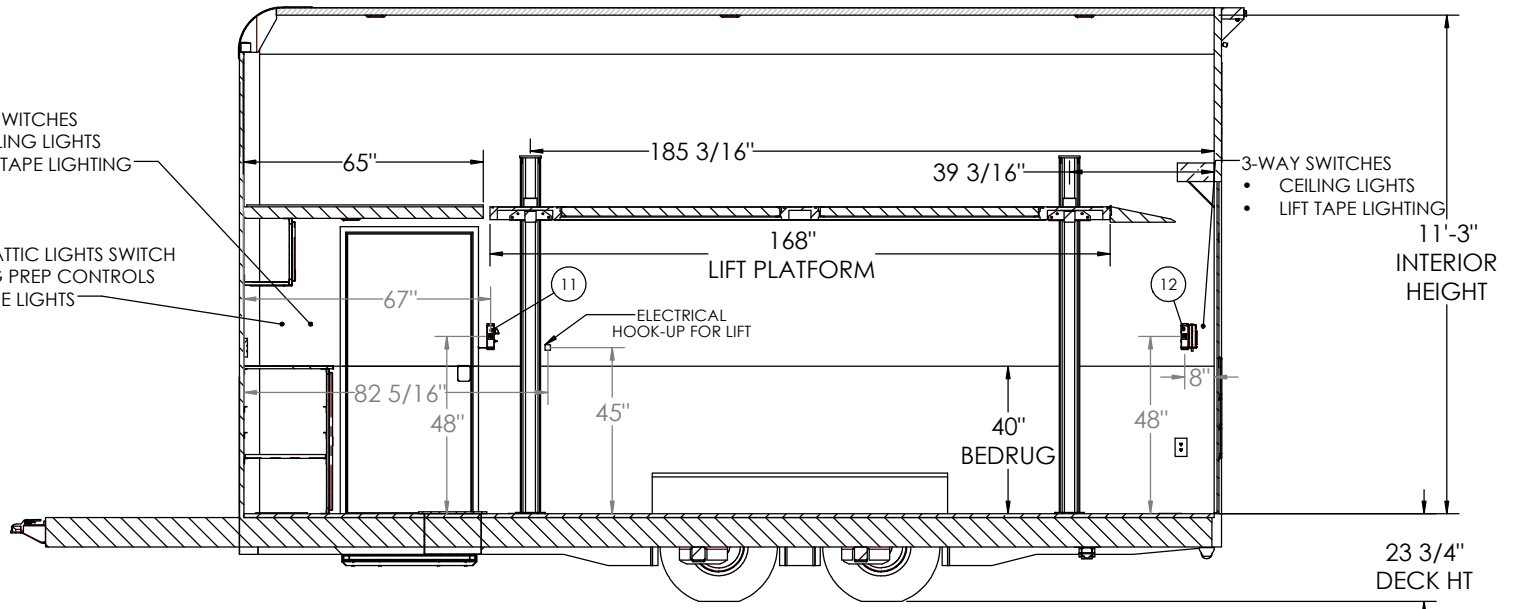
FILE NAME: QSTAB 85x22 2T7.0-PLUS SCALE:1:20 DATE PRINTED: 8/30/2021 SHEET 1 OF 6

| REVISION TABLE | | | |
|----------------|-------------|------|---------|
| REV. | DESCRIPTION | DATE | DONE BY |
| | | | |

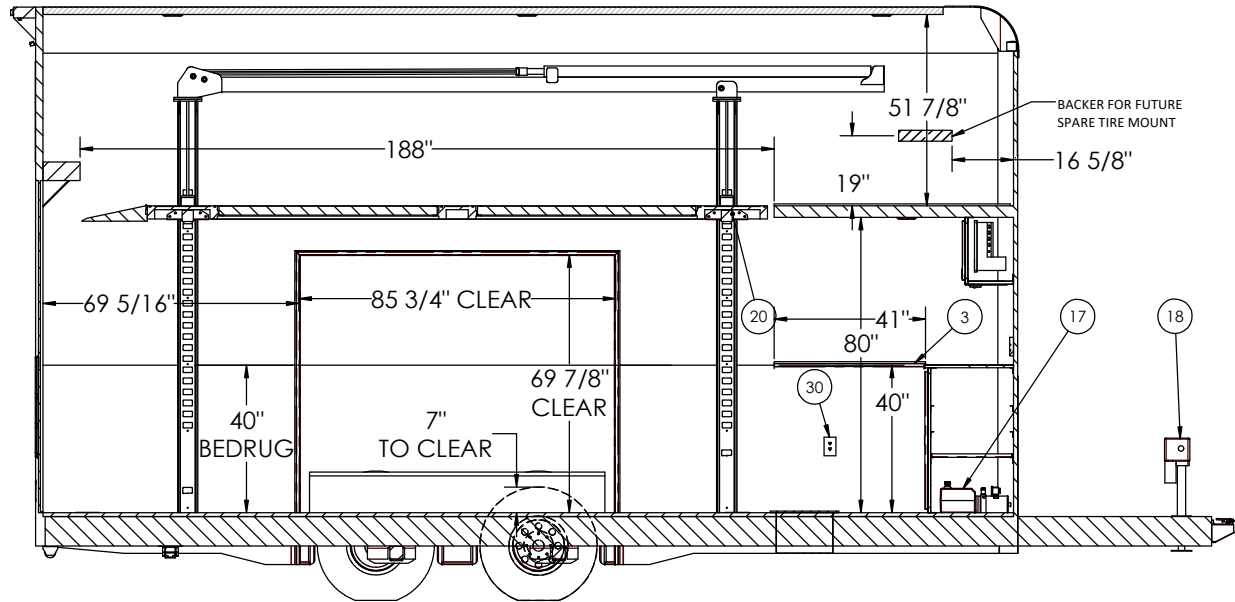


| | | | |
|------------------------------------|-------------------------|--------------|------|
| TITLE: STKAB8522 2T7.0-PLUS | | | |
| DRAWN BY: HTY | DATE: 8/17/21 | VIN/PART # | REV. |
| FILE NAME: QSTAB 85x22 2T7.0-PLUS | | | |
| SCALE: 1:22 | DATE PRINTED: 8/30/2021 | SHEET 2 OF 6 | |

- 3-WAY SWITCHES
- CEILING LIGHTS
- LIFT TAPE LIGHTING
- UNDER-ATTIC LIGHTS SWITCH
- AWNING PREP CONTROLS
- CS SCENE LIGHTS



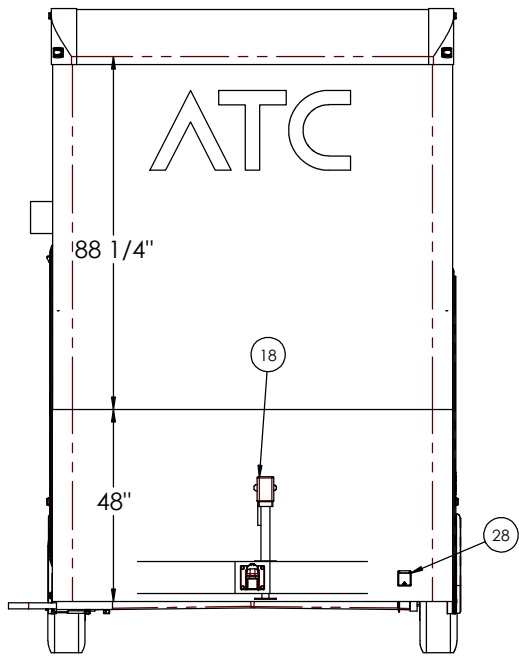
INTERIOR CURBSIDE
SECTION A-A



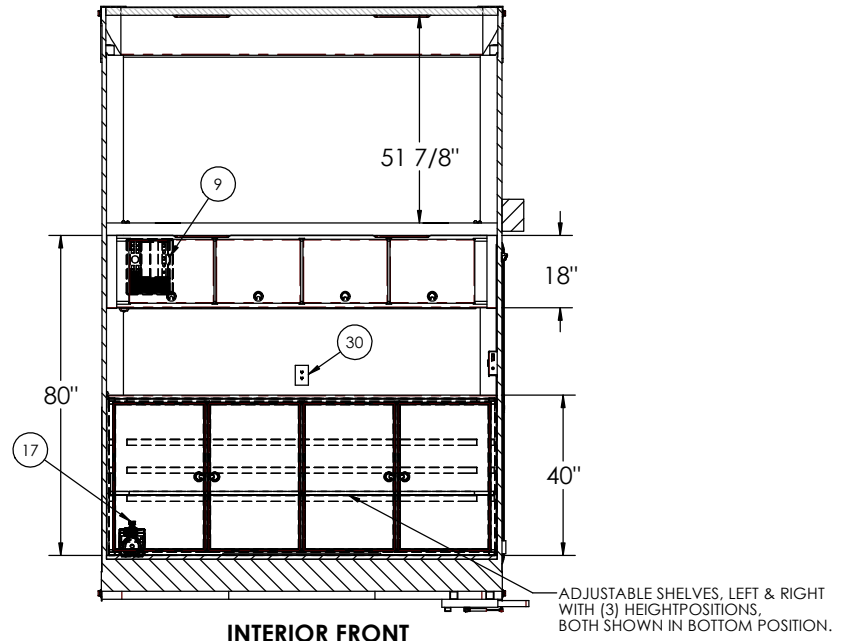
INTERIOR ROADSIDE
SECTION B-B



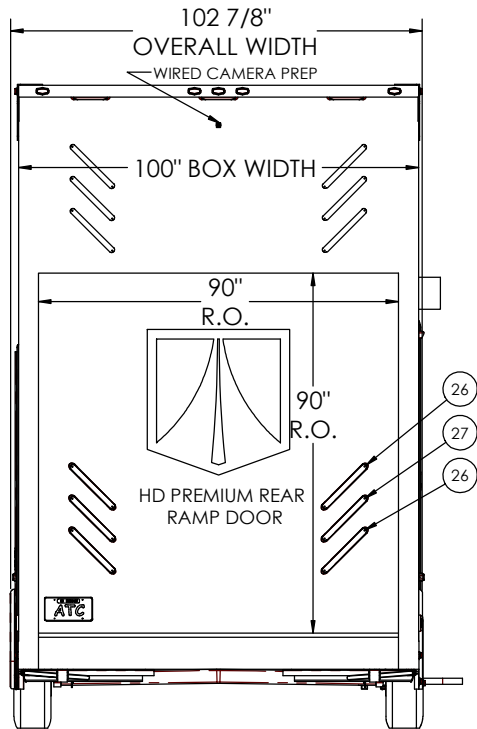
| | | | |
|------------------------------------|-------------------------|--------------|------|
| TITLE: STKAB8522 2T7.0-PLUS | | | |
| DRAWN BY: HTY | DATE: 8/17/21 | VIN/PART # | REV. |
| FILE NAME: QSTAB 85x22 2T7.0-PLUS | | | |
| SCALE: 1:26 | DATE PRINTED: 8/30/2021 | SHEET 3 OF 6 | |



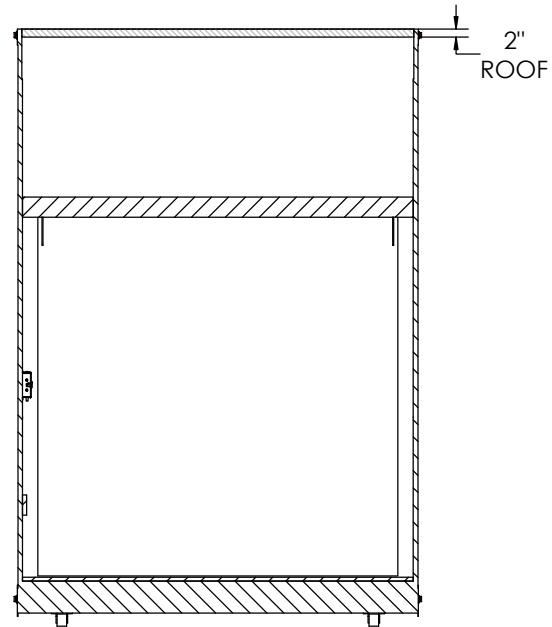
EXTERIOR FRONT



**INTERIOR FRONT
SECTION C-C**



EXTERIOR REAR

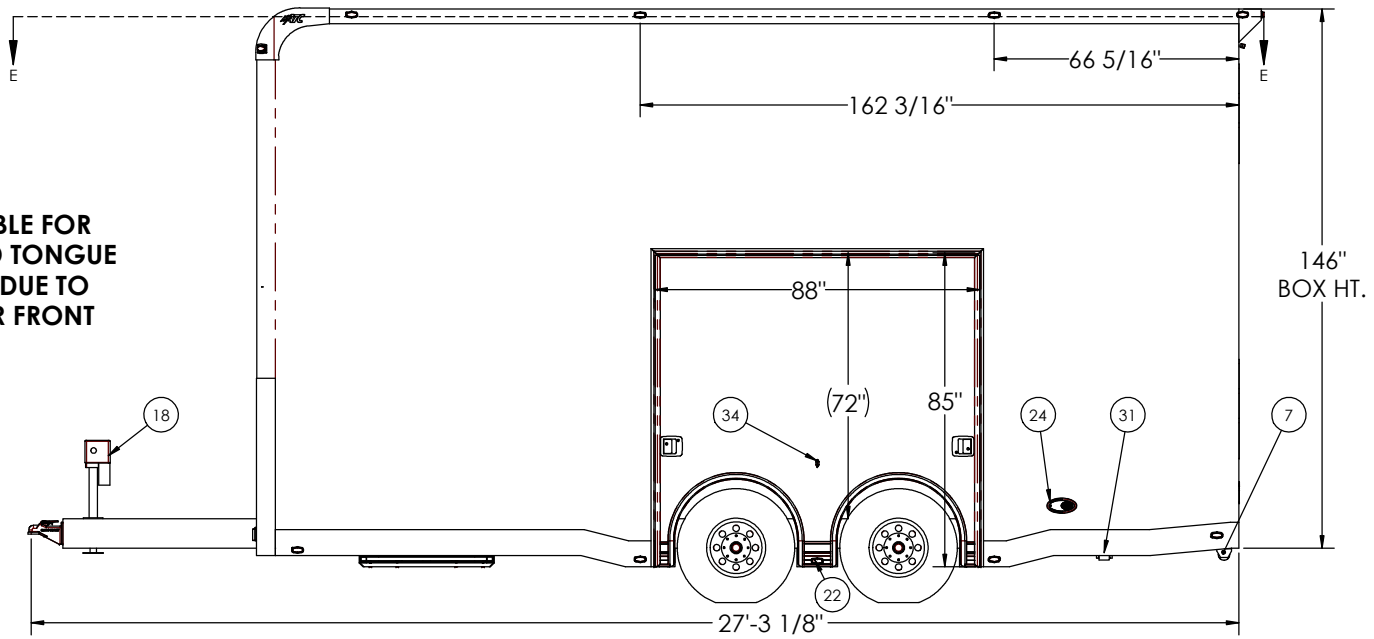


**INTERIOR REAR
SECTION D-D**

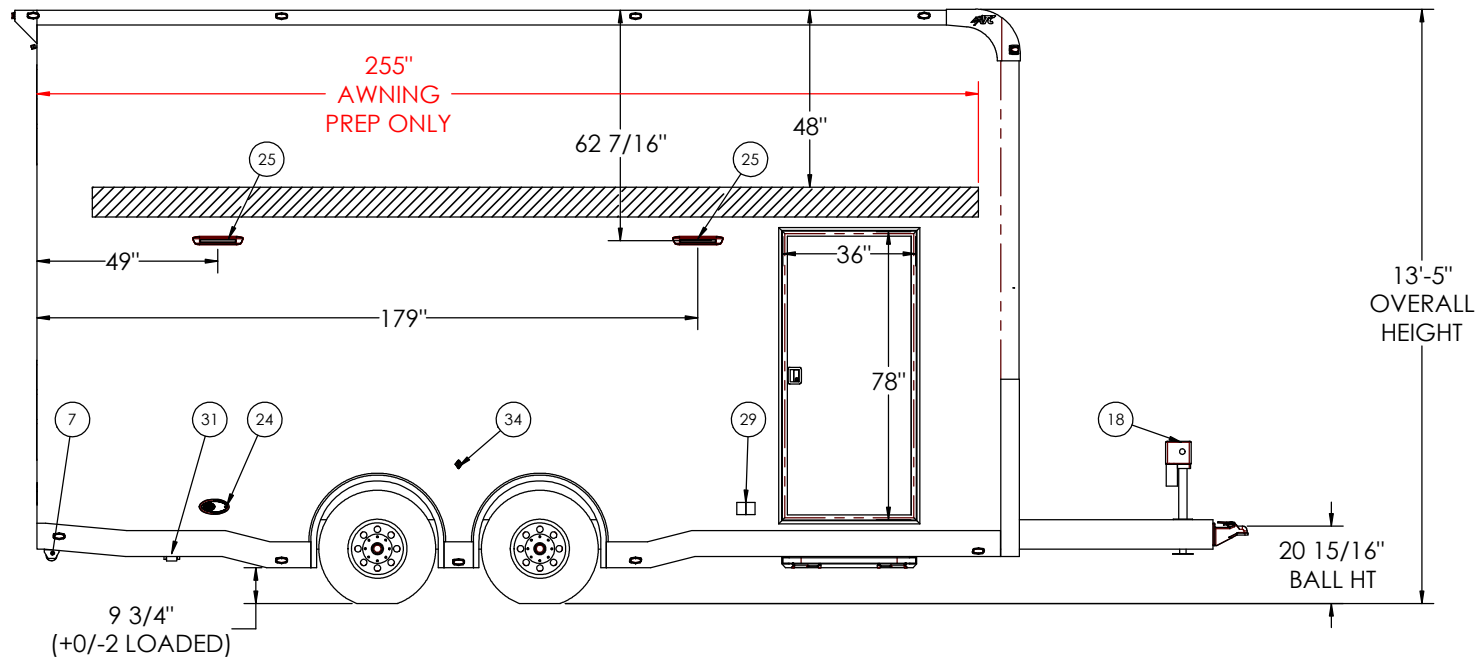


| | | | |
|------------------------------------|-------------------------|--------------|------|
| TITLE: STKAB8522 2T7.0-PLUS | | | |
| DRAWN BY: HTY | DATE: 8/17/21 | VIN/PART # | REV. |
| FILE NAME: QSTAB 85x22 2T7.0-PLUS | | | |
| SCALE: 1:24 | DATE PRINTED: 8/30/2021 | SHEET 4 OF 6 | |

ATTENTION:
 ATC IS NOT RESPONSIBLE FOR
 HIGHER THAN DESIRED TONGUE
 WEIGHTS OF TRAILERS DUE TO
 OPTIONS ON OR NEAR FRONT
 OF TRAILER.



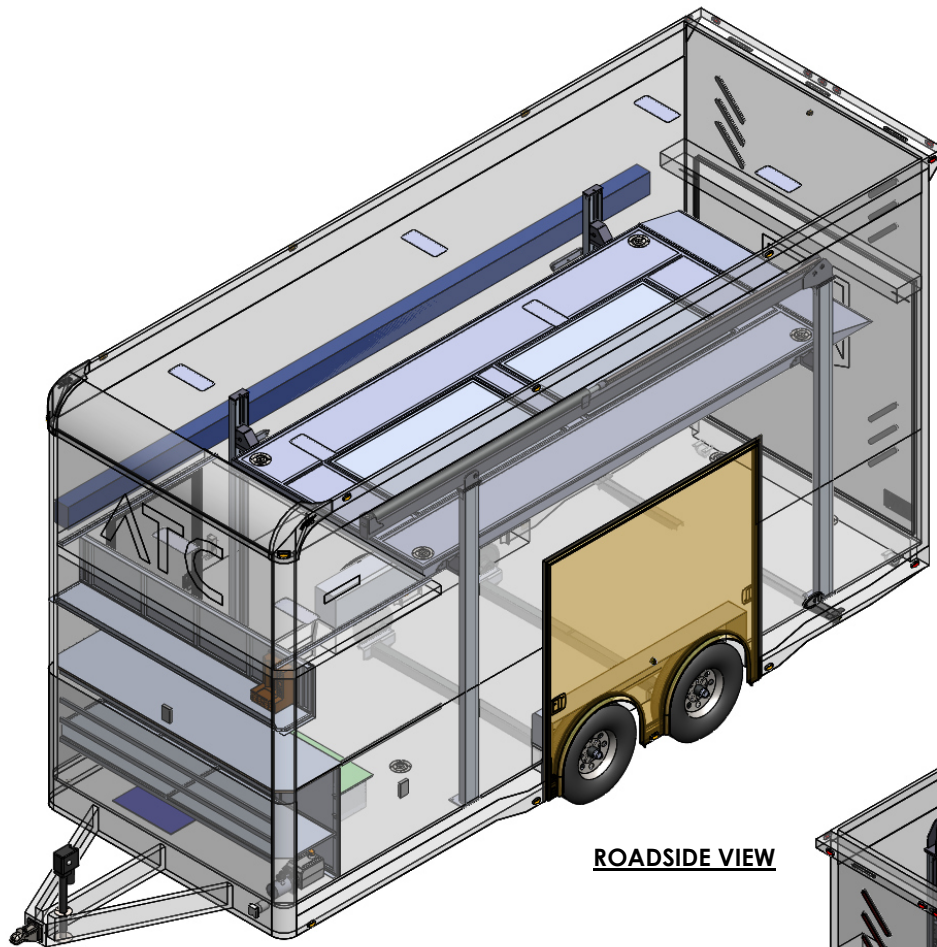
EXTERIOR ROADSIDE



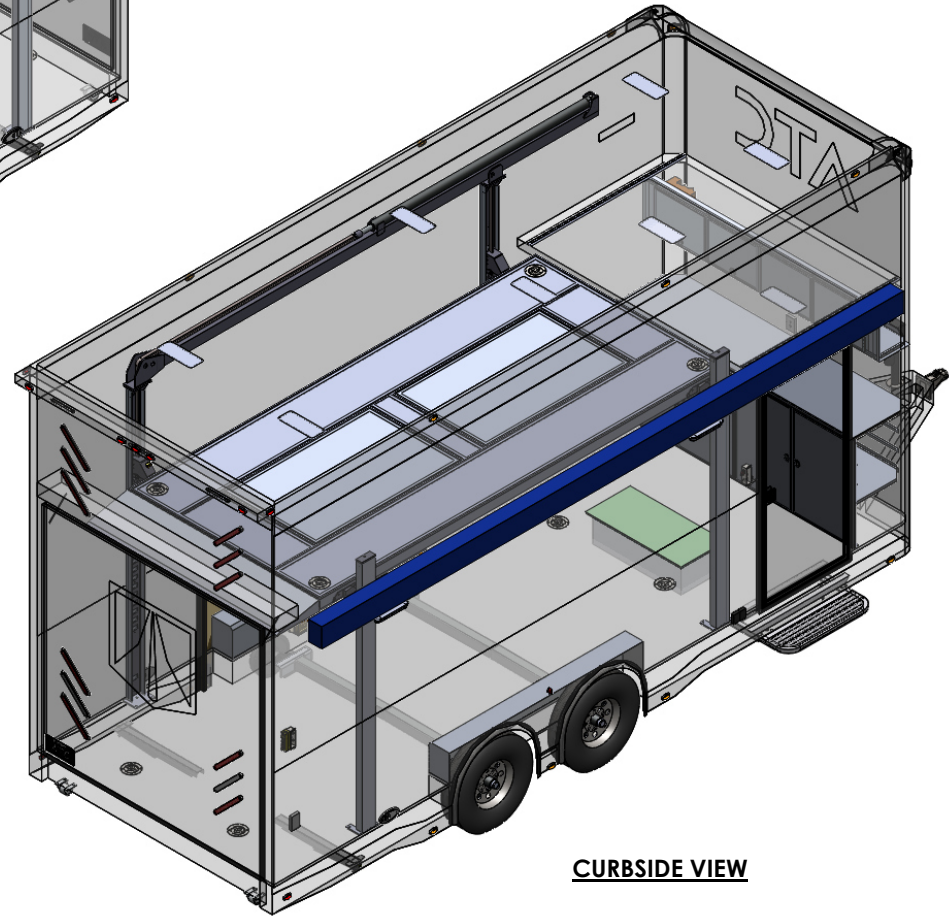
EXTERIOR CURBSIDE



| | | | |
|---------------------------------------|-------------------------|--------------|------|
| TITLE: STKAB8522 2T7.0-PLUS | | | |
| DRAWN BY: HTY | DATE: 8/17/21 | VIN/PART # | REV. |
| FILE NAME: QSTAB 85x22 2T7.0-PLUS | | | |
| SCALE: 1:26 | DATE PRINTED: 8/30/2021 | SHEET 5 OF 6 | |



ROADSIDE VIEW



CURBSIDE VIEW

SPORT-TRUCK_{RV}

www.SportTruckRV.com



| | | | |
|-----------------------------------|-------------------------|--------------|------|
| TITLE: | | | |
| STKAB8522 2T7.0-PLUS | | | |
| DRAWN BY: | DATE: | VIN/PART # | REV. |
| HTY | 8/17/21 | | |
| FILE NAME: QSTAB 85x22 2T7.0-PLUS | | | |
| SCALE:1:28 | DATE PRINTED: 8/30/2021 | SHEET 6 OF 6 | |