

LEGENDARY RENEGADE LUXURY AND QUALITY

# RENEGADE XL

LEGENDARY RENEGADE LUXURY AND QUALITY



DESIGNED FOR <sup>YOUR</sup> LIFE

LEGENDARY RENEGADE LUXURY AND QUALITY



Open and inviting is the feeling you'll experience in the Renegade XL great room. Comfortable opposing seating is surrounded by Maple hardwood cabinetry and tasteful decors. X45RB is shown in Opal Pearl with optional Italian Nutmeg high gloss cabinet finish.

LEGENDARY RENEGADE LUXURY AND QUALITY



You have arrived, and in great style too! Surrounded by high quality furnishings, you'll experience Renegade quality and thoughtful design first hand. X45RB shown in Opal Pearl décor with Italian Nutmeg High Gloss cabinet finish, optional Flexsteel furniture package and porcelain tile floor.



You'll enjoy the spacious XL kitchen, with generous workspace, Maple hardwood cabinets with raised panel doors, soft closing drawers, and satin nickel hardware. Standard Stainless Steel appliances and solid surface countertops along with mosaic tile backsplash give the XL a true luxury home feel. X45RB shown in Opal Pearl with optional Italian Nutmeg High Gloss cabinet finish and tile backsplash.



## XL LIVING SPACES

Renegade XL is the perfect blend of luxurious finishes, spacious floorplans and legendary quality. Powerful and refined, the XL takes you wherever you long to go with unmatched safety, style and comfort in models ranging from 40' to 45' in length. With XL, you have the choice of several popular chassis options...Freightliner Cascadia, Volvo VNL, and Lonestar by Navistar, with engine horsepower ratings from 500 to 600 HP. Whichever you choose, you're making a powerful statement! See your area dealer or contact Renegade RV for specific floorplan and chassis information and availability.



# BED AND BATH



Home Suite home... the XL bedroom features a 66" x 80" bed, spacious wardrobe and dresser storage, and a luxurious and private master bath including a vessel bowl sink, walk in shower with seat, and plenty of storage. X45RB is shown in Opal Pearl with optional Italian Nutmeg High Gloss cabinet finish.

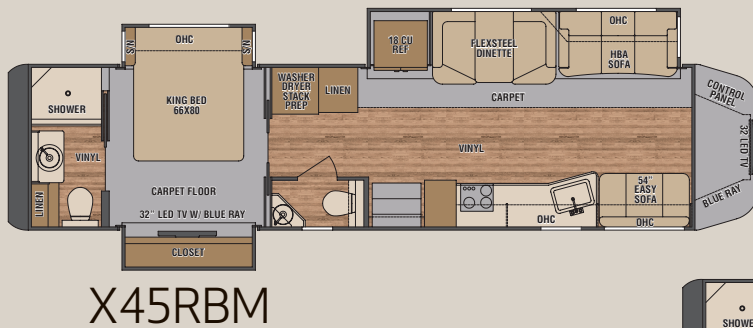
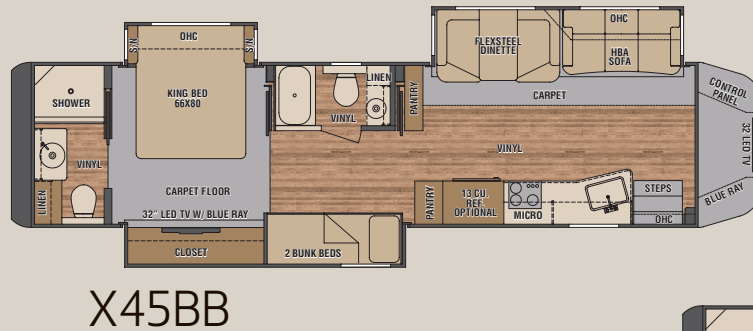
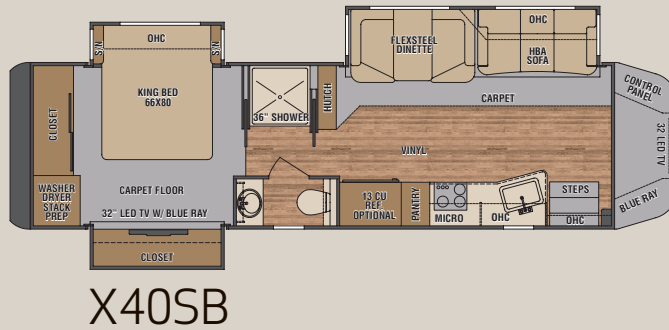
## SPECIFICATIONS

### EXTERIOR

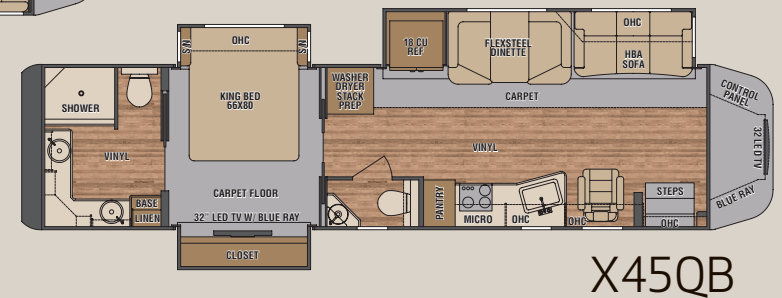
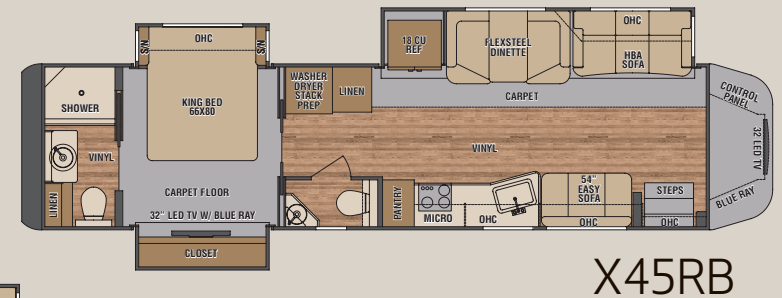
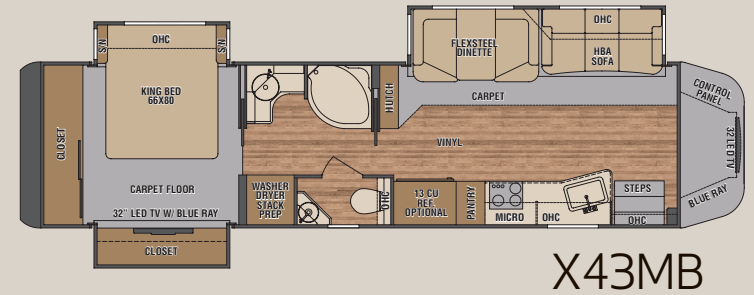
O.A. Width	100-1/4"
O.A. Height (to top of AC)	12'-10"

### INTERIOR

Standard Height	84"
Width	95-1/2"



# FLOORPLAN OPTIONS



# STANDARD AND OPTIONAL FEATURES

## Construction

- Tubular Aluminum Welded Sidewall and Roof Structure
- 2" Vacuum Laminated Smooth Gel-coat Sidewalls
- 1.5" High Density Foam Insulation in Sidewalls and Roof
- One Piece Crowned and Laminated Fiberglass Roof
- "Super Sandwich" Floor Construction Including:
  - (1) 3/4" Fir Plywood Deck Over 2 x 4 Wood-Framed Residential Floor
  - (2) 2" Welded Tubular Steel Floor Joist System
  - (3) 3" Steel Tube Longitudinal Floor Beams
- 3.5" Premium Grade Roxul Sound Deadening and Thermal Insulation in Floor
- Galvanized Steel Vapor Barrier

## Exterior Features

- Premium 3 color Full body paint with Clearcoat
- LED Brake and Turn Lights
- Aerodynamic Fiberglass Front Cap
- Stylish two piece Rear Fiberglass Cap and Bumper
- Molded Fiberglass tank covers and Cab steps with Stainless Steel Step Treads
- Side Swing Luggage Doors with Single Handle Latches
- A&E Weatherpro Electric Awning
- Full width Mud Flap with Stainless Steel XL Logo
- Tinted Dual Pane Insulated Windows with Screens
- Triple Slide-out Floorplans with Toppers
- Fully Automatic 4 Point Hydraulic Leveling
- 20,000 Lb. Hitch
- 7 way Flat Pin Tow Connection
- Lighted Entry Door Grab Handle
- Color Backup Camera with Monitor

## Entertainment Systems

- LG 32" Smart LED TV with Remote in Living Room and Bedroom
- Onkyo AM/FM/Home Theater Receiver
- 5.1 Channel Surround Sound System with Ceiling Speakers & Subwoofer
- LG BluRay Player with Remote in Living Room and Bedroom
- High Definition/Standard Definition Rooftop TV Antenna
- Kenwood AM/FM/CD/DVD Dash System with 4 Speakers

## Interior Features

- Maple Hardwood Cabinets with Raised Panel Doors & Hidden Hardware
- Solid Surface Countertops in Kitchen and Bath
- Solid Surface Dinette Tabletop
- Soft Closing Full Extension Ball Bearing Drawer Slides
- Stainless Steel Kitchen Sink with Solid Surface Covers
- Satin Nickel Faucet with Pull-out Sprayer
- Soft Touch Padded Vinyl Ceiling
- Ultra Soft Touch Flexsteel Furniture Package
- Flexsteel Ultra Soft Touch Driver & Passenger Seats with Recliners
- Hide-a-bed Sofa and Dinette with Drawer Storage
- Energy Efficient Flush Mount LED Ceiling, Wall Sconce, Bath and Toe Kick Lighting
- LED Entry Step and Floor Level Lighting
- Automatic LED Wardrobe Lighting
- Mini-king Bed with Luxurious Comforter, Pillows and Bed Scarf
- 66" x 80" Ortho-Rest Mattress
- Choice of 4 Designer Interior Decors

## Electrical Systems

- 8KW Onan Quiet Diesel Generator with Auto Start System
- (4) Group 27 AGM Batteries
- 2800 Watt Inverter
- 50 Amp Electrical Panel
- Energy Efficient LED Lighting Throughout
- 12V Tank Heaters on Grey and Black Holding Tanks

## Bath Systems & Amenities

- One Piece Fiberglass Shower with Enclosure
- Deluxe Hardwood Vanity, Medicine Cabinet and Storage Cabinets
- Vessel Bowl Sink with Satin Nickel Highrise Faucet
- Satin Nickel Bath Fixtures
- Porcelain Macerator Toilet
- Whole House Water Filter
- Black Tank Flush System

## Chassis & Cab

- Renegade XL is now available on the Freightliner Cascadia, International Lonestar, and Volvo VNL Chassis, with product specific engine and transmission options and specifications. Contact Renegade RV or your Renegade Dealer for complete chassis availability and information.
- Polished Aluminum Wheels with Center Caps (Polished Wheels on Outside Rear Duals Only)
- Air Ride Rear Suspension System
- Air Brakes with 4 wheel ABS
- 3 Stage Engine Compression Brake
- Air Ride Driver & Passenger Seat Pedestals with Recliners
- Power Windows and Door Locks
- Electronic Cruise Control
- Power/Heated Remote Control Mirrors
- Tilt & Telescoping Steering Wheel
- Premium Sound and Thermal Insulation Package

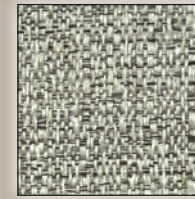
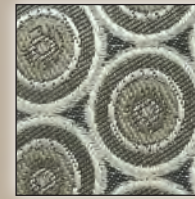
## Appliances & Utilities

- Stainless Steel Refrigerator and Cooking Appliances
- Samsung 1.5 Cu. Ft. Over-the-Range Microwave Oven
- Stainless Steel Triple Sealed Burner LP Cooktop with Solid Surface Covers
- (2) 15,000 BTU Low Profile Roof A/C with Heat Pumps & Chill Grill
- Electronic Ignition 40,000btu LP Furnace
- Tankless Water Heater
- Washer/Dryer Pre-wire and Pre-plumb Package

## Popular Options

- 450D AquaHot Hydronic Heating System with Engine Pre-heat
- Ultraleather Furniture Package
- Carefree Apex Lateral Arm Electric Awning with Motion Sensor
- 18 Cu. Ft. Residential Refrigerator
- Stainless Steel Microwave Oven
- Stackable Washer/Dryer
- Outside Entertainment Center
- Roof Mounted Solar Panels
- Central Vacuum System
- 50 Amp Power Shore Cord Reel
- 4 Color Full Body Paint Upgrade

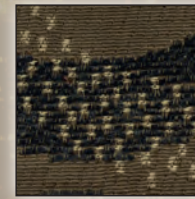
# DECOR OPTIONS



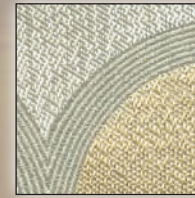
GRAPHITE MERLOT DECOR



MOONSTONE DECOR



MOCHA DECOR



OPAL PEARL DECOR

YOUR RENEGADE DEALER:

Due to continued product improvement and changes in suppliers, design, and production; equipment, colors, material specifications, prices and model availability are subject to change without notice. Some photography may show optional items. Kibbi manufactures motorhomes and trailers of varying sizes which may or may not be legal in all states; it is the responsibility of the owner to determine the legal lengths in the state of operation.

©2015 Kibbi, LLC • 52216 SR 15, Bristol IN46507 • 888.522-1126 • RenegadeRV.com



YOUR  
DESIGNED FOR LIFE